



Preparing every student to thrive in a global society.

Agenda Item Details

| | |
|--------------------|--|
| Meeting | May 14, 2015 - ESUHSD REGULAR BOARD MEETING - 4:30 P.M., DISTRICT OFFICE - BOARD ROOM, 830 N. CAPITOL AVENUE, SAN JOSE, CA 95133 |
| Category | 8. SPECIAL ORDER OF BUSINESS - OPERATIONAL ITEMS/BOARD DISCUSSION AND/OR ACTION |
| Subject | 8.03 Presentation, Discussion and/or Action regarding Demography Services Study - Marcus Battle, Associate Superintendent of Business Services, and Ann Feng-Gagne, Executive Director, Dolinka Group, LLC |
| Type | Action, Discussion, Information, Presentation |
| Recommended Action | It is recommended that the Board of Trustees receive the Demography study as presented. |

EAST SIDE UNION HIGH SCHOOL DISTRICT

Item: 8.03

TO: Board of Trustees

FROM: Chris D. Funk, Superintendent

PREPARED BY: Marcus Battle, Associate Superintendent of Business Services, and Ann Feng-Gagne, Executive Director, Dolinka Group, LLC

SUBJECT: Presentation, Discussion and/or Action regarding Demography Services Study

The Board approved and the District contracted for the professional services of Dolinka Group on January 15, 2015, to conduct a Demographic Analysis and Enrollment Projection Study. The study included an in-depth analysis of enrollment, including birth data, migration rates, and charter school growth; land use, development, and planning; residency and census data along with Geographic Information System (GIS) data and spatial analysis. The study aimed to examine enrollment trends throughout the District for budgetary planning, as well as current and future building capacity needs. The District intends to use the study results to inform the current budget and for future facility planning efforts and considerations by the Board and administration.

FISCAL IMPACT:
Not Applicable

FUNDING SOURCE:
Not Applicable

RECOMMENDATION:
It is recommended that the Board of Trustees receive Demography study as presented.

[Presentation_EnrollmentProjections_Dolinka Grp.pdf \(1,801 KB\)](#)

Motion & Voting

It is recommended that the Board of Trustees receive the Demography study as presented.

Item received

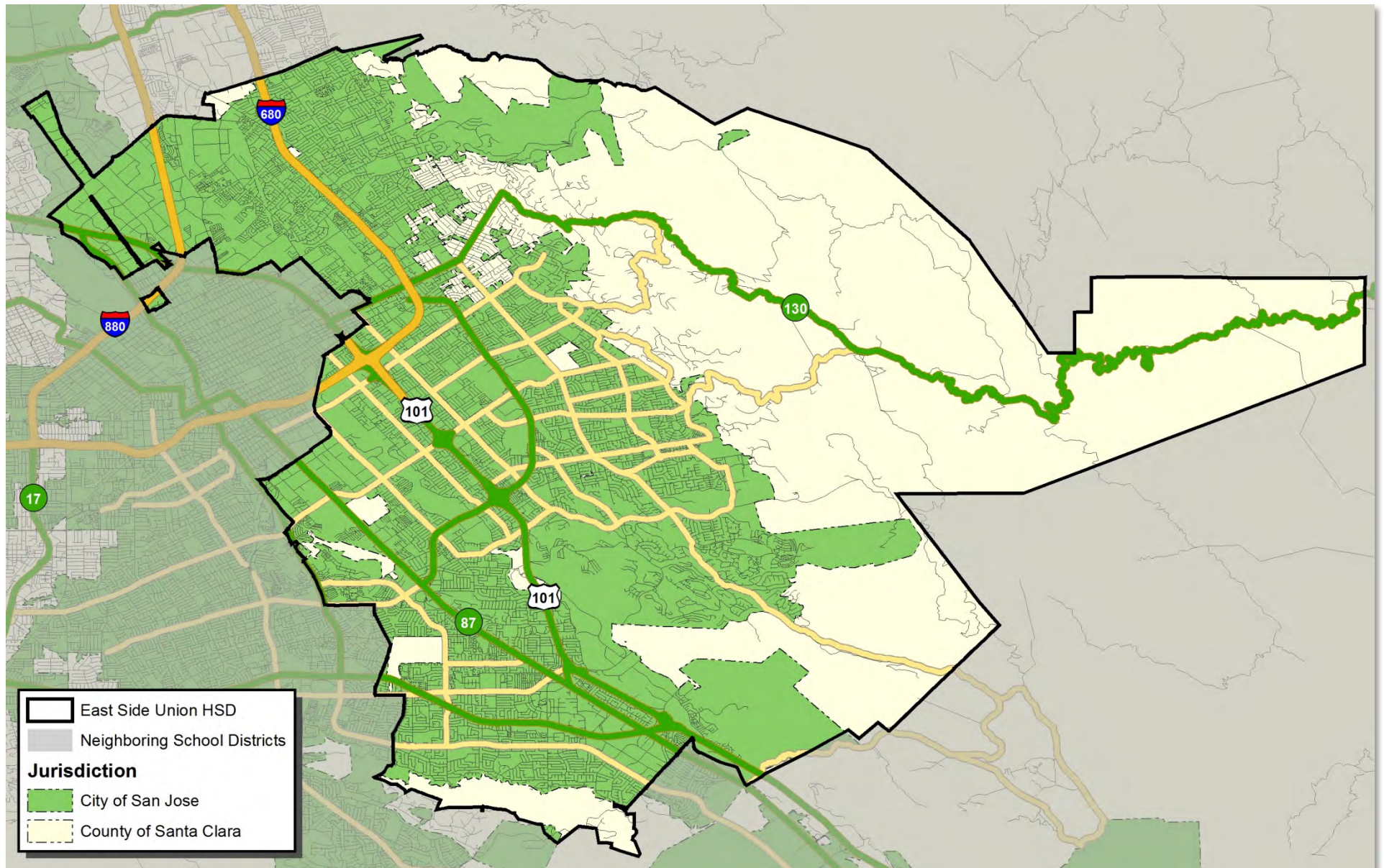
**East Side Union High
School District**

Enrollment Analysis
May 14, 2015

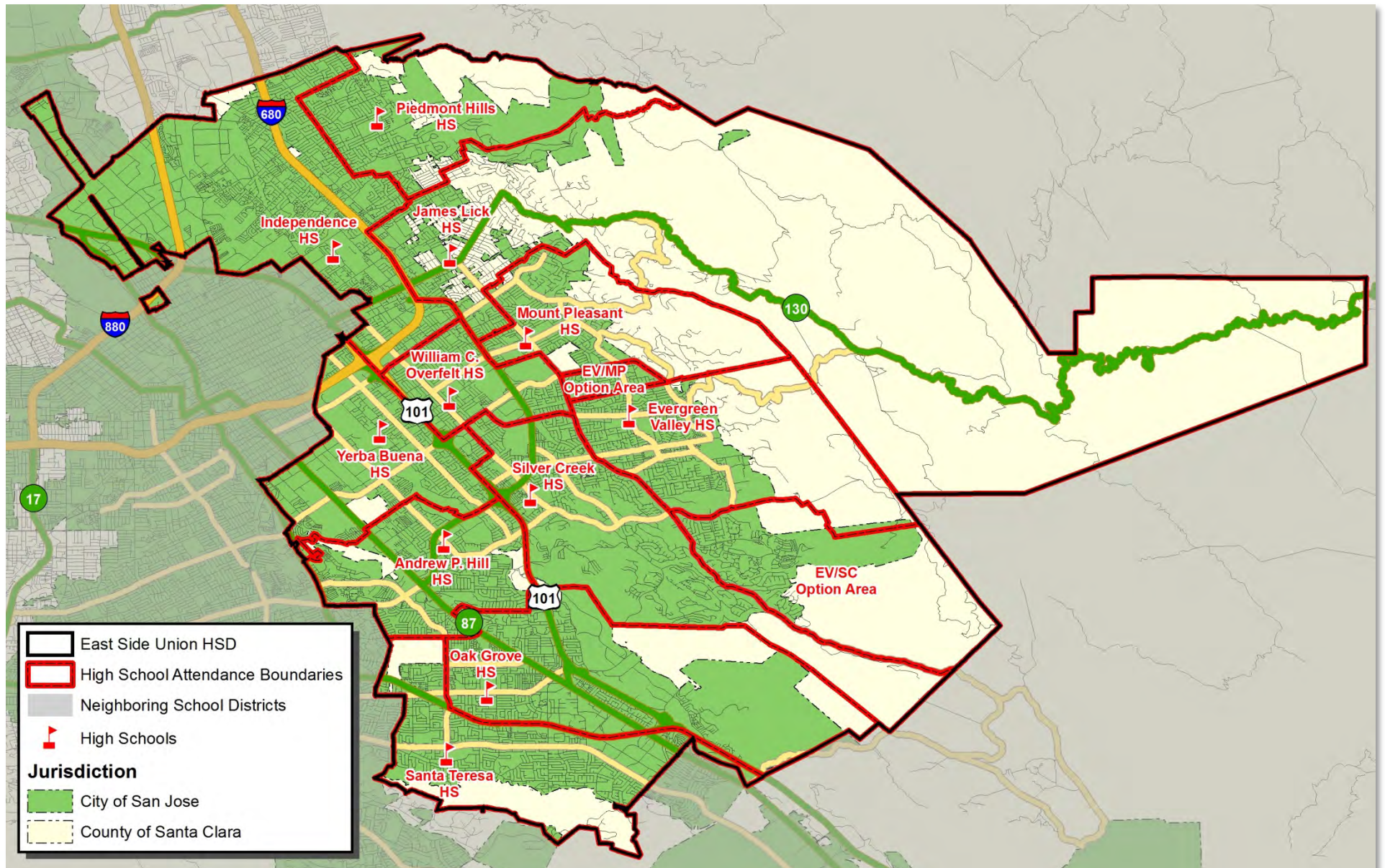


Section I: **Introduction**

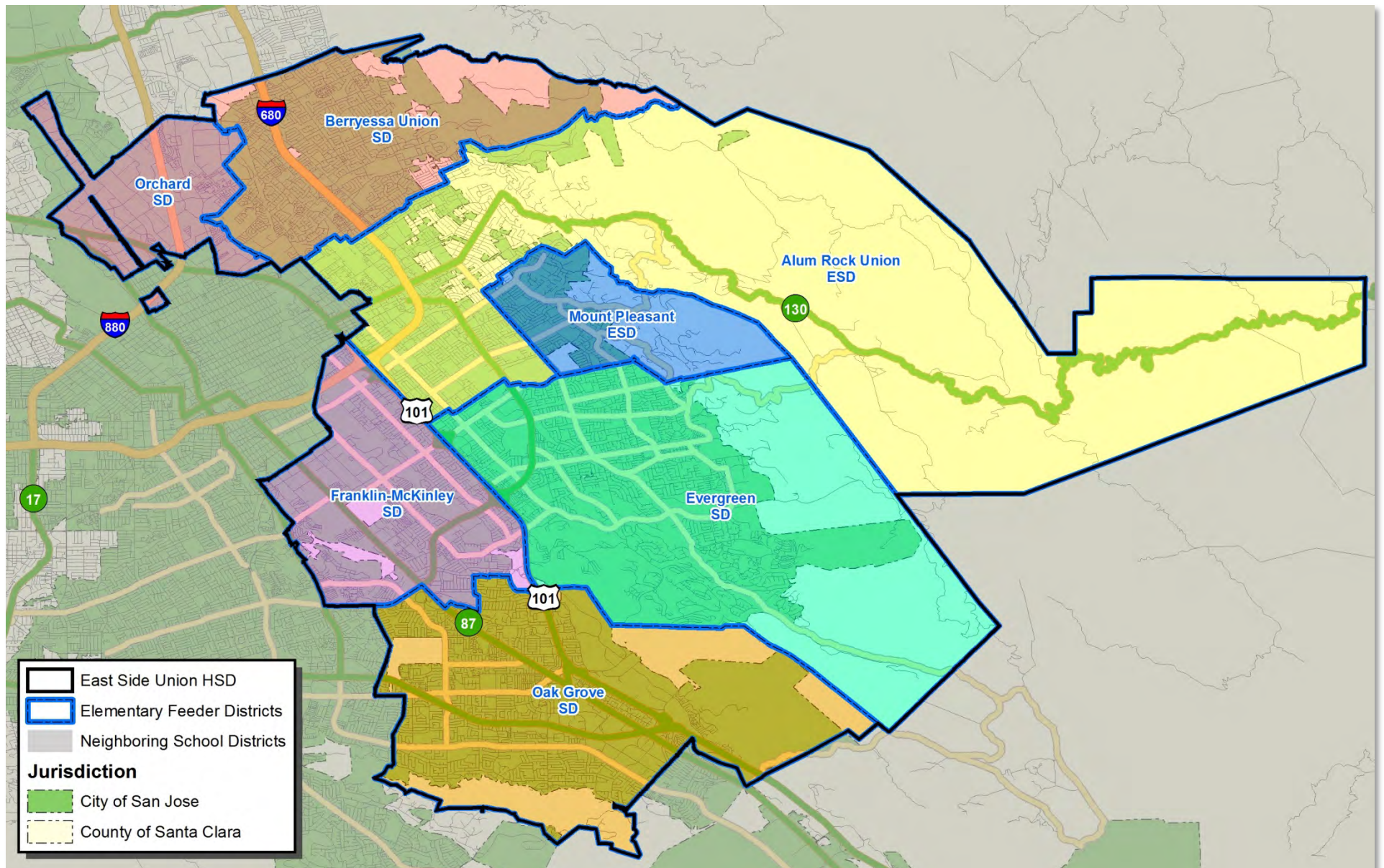
Geographic Profile



High School Attendance Boundaries



Elementary Feeder Districts



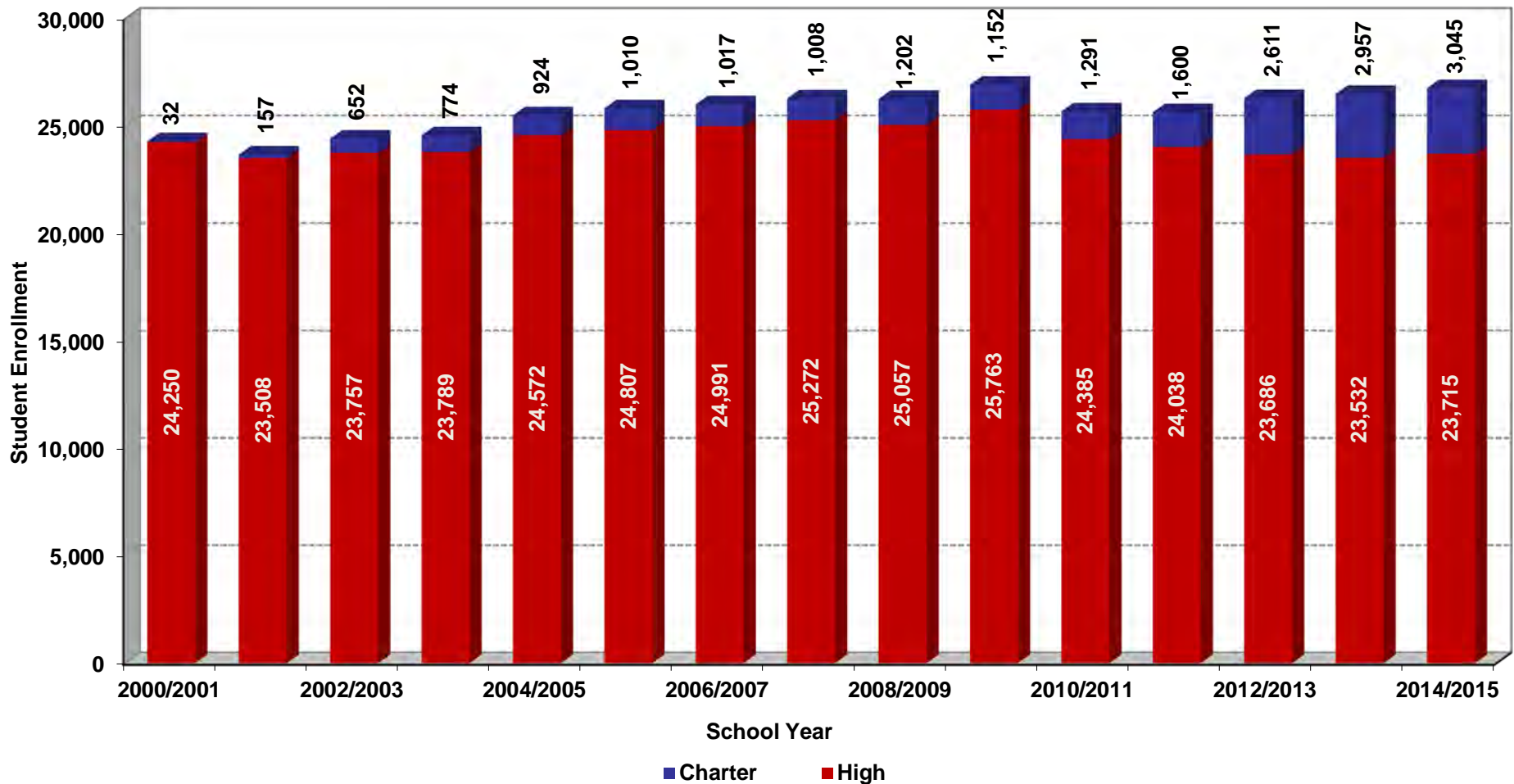
The logo of East Side Union High School District is a circular seal. It features a central shield with a cross-like design. The text "EAST SIDE UNION" is at the top, "VALLEY" is at the bottom, and "HIGH SCHOOL DISTRICT" is written around the inner edge of the circle.

Section II:

Overview of Historical Enrollment

Overview of Historical Enrollment *Enrollment Trends (continued)*

Historical District Enrollment by Grade Level



[1] Fiscal Year 2014-2015 Enrollment is based on CBEDs

Overview of Historical Enrollment *Inter-District Transfer Trends*

Incoming Inter-District Transfers

| Item | 2011/2012 | 2012/2013 | 2013/2014 | 2014/2015 |
|---------------------------------|---------------|---------------|---------------|---------------|
| ACCEL Middle College | 4 | 1 | | |
| Andrew Hill HS | 47 | 34 | 35 | 19 |
| Apollo HS | 3 | 2 | 1 | 1 |
| Calero HS | | | 1 | 3 |
| Evergreen Valley HS | 6 | 8 | 6 | 4 |
| Foothill HS | 20 | 17 | 9 | 8 |
| Independence HS | 91 | 81 | 76 | 68 |
| James Lick HS | 24 | 13 | 8 | 6 |
| Mt Pleasant HS | 24 | 22 | 19 | 17 |
| Non Public School | | 2 | | |
| Oak Grove HS | 45 | 44 | 41 | 33 |
| Pegasus HS | 3 | 3 | 3 | 2 |
| Phoenix HS | 3 | | 3 | 2 |
| Piedmont Hills HS | 24 | 21 | 17 | 14 |
| Santa Teresa HS | 112 | 97 | 100 | 77 |
| Silver Creek HS | 15 | 18 | 21 | 16 |
| WC Overfelt HS | 36 | 21 | 16 | 13 |
| Yerba Buena HS | 53 | 44 | 52 | 49 |
| Total Incoming Transfers | 510 | 428 | 408 | 332 |
| Total Enrollment | 23,134 | 23,142 | 23,226 | 23,504 |
| Percentage | 2.20% | 1.85% | 1.76% | 1.41% |

Overview of Historical Enrollment *Intra-District Transfer Trends*

High School Intra-District Transfers

| School of Residence | ACCEL Middle College | Andrew P. Hill HS | Apollo HS | Calero HS | Evergreen Valley HS | Foothill HS | Independence HS | James Lick HS | Mt. Pleasant HS (Magnet) | Non-Public School | Oak Grove HS | Pegasus HS | Phoenix HS | Piedmont Hills HS (Magnet) | Santa Teresa HS | Silver Creek HS | William C. Overfelt HS | Yerba Buena HS | Total Students Living in Attendance Area |
|---|----------------------|-------------------|------------|------------|---------------------|-------------|-----------------|---------------|--------------------------|-------------------|--------------|------------|------------|----------------------------|-----------------|-----------------|------------------------|----------------|--|
| Andrew P. Hill HS | 3 | 1,770 | 7 | 29 | 7 | 44 | 9 | 3 | 7 | 12 | 143 | 2 | 13 | 3 | 83 | 79 | 7 | 89 | 2,310 |
| Evergreen Valley HS | 18 | 4 | 9 | 3 | 2,029 | 21 | 3 | 2 | 8 | 2 | | 5 | | 7 | 1 | 33 | 4 | 2 | 2,151 |
| Evergreen Valley/Mt. Pleasant Optional Area | 1 | | 8 | 4 | 389 | 5 | 1 | 2 | 21 | 1 | 2 | 3 | | | | 5 | 2 | 5 | 449 |
| Evergreen Valley/Silver Creek Optional Area | 2 | 1 | 2 | | 191 | 4 | | | 1 | 2 | | 2 | | 1 | 2 | 33 | | | 241 |
| Independence HS | 1 | 8 | 4 | 4 | 4 | 50 | 2,704 | 32 | 23 | 16 | 4 | 68 | 2 | 312 | 6 | 15 | 33 | 23 | 3,309 |
| James Lick HS | 2 | 3 | 7 | 2 | 3 | 73 | 171 | 1,018 | 106 | 5 | 2 | 12 | 3 | 105 | 5 | 17 | 22 | 8 | 1,564 |
| Mt. Pleasant HS | 3 | 5 | 20 | | 28 | 32 | 15 | 27 | 1,130 | 3 | 3 | 3 | | 11 | 5 | 20 | 23 | 1 | 1,329 |
| Oak Grove HS | 3 | 51 | | 57 | 3 | 28 | 4 | 2 | 5 | 11 | 1,638 | | 20 | 4 | 277 | 18 | 5 | 12 | 2,138 |
| Piedmont Hills HS | 5 | 1 | | 1 | | 11 | 52 | | 4 | 5 | 2 | 18 | | 1,731 | | | | | 1,830 |
| Santa Teresa HS | 5 | 19 | 1 | 49 | 1 | 5 | 1 | | 4 | 6 | 50 | | 36 | 1 | 1,815 | 5 | | 3 | 2,001 |
| Silver Creek HS | 6 | 16 | 19 | 5 | 33 | 19 | 4 | 3 | 25 | 3 | 6 | 7 | 2 | 2 | 11 | 2,073 | 18 | 9 | 2,261 |
| William C. Overfelt HS | | 14 | 51 | 1 | 15 | 25 | 45 | 8 | 78 | 5 | 5 | 1 | 1 | 16 | 3 | 66 | 1,281 | 24 | 1,639 |
| Yerba Buena HS | 2 | 99 | 23 | 7 | 4 | 18 | 29 | 5 | 23 | 3 | 15 | 6 | | 8 | 21 | 84 | 47 | 1,555 | 1,949 |
| Inter-District Transfer ("IDT") | | 19 | 1 | 3 | 4 | 8 | 68 | 6 | 17 | | 33 | 2 | 2 | 14 | 77 | 16 | 13 | 49 | 332 |
| Unknown | | | | | | | | 1 | | | | | | | | | | | 1 |
| Total | 51 | 2,010 | 152 | 165 | 2,711 | 343 | 3,107 | 1,108 | 1,452 | 74 | 1,903 | 129 | 79 | 2,215 | 2,306 | 2,464 | 1,455 | 1,780 | 23,504 [1] |

[1] Based on EUHSD's database of 23,504 students as of February 2015 versus CBEDS enrollment of 23,715.

Overview of Historical Enrollment *Charter School Enrollment Trends*

Charter School Enrollment

| School of Residence | Ace Charter HS | Downtown College Prep | Escuela Popular AFT [2] | Escuela Popular CTC [2] | Kipp San Jose Collegiate | Latino College Preparatory Academy | Luis Valdez Leadership Academy | San Jose Conservation Corps Charter [2] | Summit Rainier | Summit Tahoma | Total Students Living in Attendance Area |
|---|----------------|-----------------------|-------------------------|-------------------------|--------------------------|------------------------------------|--------------------------------|---|----------------|---------------|--|
| Andrew P. Hill HS | 10 | 3 | 9 | 53 | 14 | 11 | 35 | 45 | 11 | 15 | 206 |
| Evergreen Valley HS | | 1 | | 3 | 1 | 1 | | 2 | 10 | 11 | 29 |
| Evergreen Valley/Mt. Pleasant Optional Area | | 1 | 1 | | 8 | 5 | 1 | 3 | 3 | | 22 |
| Evergreen Valley/Silver Creek Optional Area | | | | | 2 | | | | 7 | 11 | 20 |
| Independence HS | 90 | 52 | 75 | 103 | 153 | 108 | 2 | 33 | 34 | 55 | 705 |
| James Lick HS | 18 | 22 | 130 | 163 | 80 | 103 | 1 | 31 | 47 | 71 | 666 |
| Mt. Pleasant HS | 1 | 1 | 31 | 58 | 14 | 67 | 1 | 11 | 35 | 31 | 250 |
| Oak Grove HS | | 5 | 3 | 15 | 7 | 8 | | 18 | 14 | 7 | 77 |
| Piedmont Hills HS | | 2 | 6 | 6 | 8 | | | 2 | 15 | 16 | 55 |
| Santa Teresa HS | | 2 | | 7 | 1 | 2 | 1 | 8 | 3 | 2 | 26 |
| Silver Creek HS | 6 | 1 | 7 | 20 | 9 | 6 | | 14 | 23 | 26 | 112 |
| William C. Overfelt HS | 21 | 20 | 35 | 73 | 80 | 45 | 2 | 29 | 14 | 39 | 358 |
| Yerba Buena HS | 26 | 13 | 13 | 72 | 38 | 24 | 52 | 35 | 15 | 9 | 297 |
| Inter-District Transfer [1] | 33 | 27 | 78 | 293 | 50 | 30 | 4 | 70 | 36 | 36 | 657 |
| Unknown | | | 2 | 1 | 4 | 1 | | 2 | 1 | | 11 |
| Total | 205 | 150 | 390 | 867 | 469 | 411 | 99 | 303 | 268 | 329 | 3,491 |

[1] Students attending Charter Schools from outside East Side Union High School District.

[2] Enrollment in Escuela Popular AFT & CTC and San Jose Conservation Corps include non-high school students.

The logo of East Side Union High School District is a circular seal. It features a central shield with a cross-like design. The text "EAST SIDE UNION" is arched across the top, and "HIGH SCHOOL DISTRICT" is arched across the bottom. The words "Wilson" and "Valley" are written in a smaller font across the middle of the shield.

Section III:

Inputs and Methodology

Enrollment Projection Inputs

Existing Enrollment

- » 2014/2015 student enrollment as provided by the School District.

Cohort Survival Factors

- » The likelihood of a student progressing from one grade level to the next.

Birth Rates

- » Historic and projected number of births within the School District, Santa Clara County, and historical averages are used to project incoming kindergarten enrollment from existing residential units.

Residential Development

- » Information on future residential projects was obtained from the City of San Jose.

Inputs and Methodology Cohort Survival Factors

School Factors

| School | K-1 ^[1] | 1-2 | 2-3 | 3-4 | 4-5 | 5-6 | 6-7 | 7-8 | 8-9 | 9-10 | 10-11 | 11-12 |
|--|--------------------|---------|---------|---------|---------|---------|---------|---------|---------|---------|---------|---------|
| Andrew Hill HS | | | | | | | | | 86.97% | 99.53% | 99.91% | 100.20% |
| Evergreen Valley HS | | | | | | | | | 94.16% | 101.55% | 100.42% | 99.97% |
| Independence HS | | | | | | | | | 86.24% | 100.86% | 102.43% | 103.11% |
| James Lick HS | | | | | | | | | 81.97% | 102.02% | 100.12% | 99.19% |
| Mount Pleasant HS | | | | | | | | | 95.66% | 98.51% | 99.87% | 98.79% |
| Oak Grove HS | | | | | | | | | 94.44% | 98.85% | 97.64% | 98.66% |
| Option Area - Mount Pleasant/Evergreen | | | | | | | | | 115.03% | 101.23% | 101.77% | 101.91% |
| Option Area - Silver Creek/Evergreen | | | | | | | | | 68.92% | 95.17% | 101.91% | 100.69% |
| Piedmont Hills HS | | | | | | | | | 113.11% | 100.54% | 99.72% | 99.91% |
| Santa Teresa HS | | | | | | | | | 108.10% | 98.47% | 100.72% | 99.58% |
| Silver Creek HS | | | | | | | | | 90.81% | 100.30% | 102.18% | 100.67% |
| W.C. Overfelt HS | | | | | | | | | 89.41% | 101.49% | 99.19% | 98.93% |
| Yerba Buena HS | | | | | | | | | 83.48% | 101.36% | 101.35% | 100.38% |
| Alum Rock SD | 90.83% | 97.39% | 97.42% | 98.92% | 105.88% | 98.89% | 99.68% | 98.43% | | | | |
| Berryessa SD | 93.49% | 96.16% | 100.65% | 98.47% | 100.07% | 100.93% | 100.46% | 99.75% | | | | |
| Evergreen SD | 99.82% | 102.59% | 102.97% | 100.89% | 101.64% | 100.38% | 97.88% | 98.98% | | | | |
| Franklin-McKinley SD | 94.95% | 99.61% | 98.49% | 98.23% | 100.39% | 95.32% | 93.54% | 100.96% | | | | |
| Mount Pleasant SD | 92.63% | 96.37% | 98.47% | 101.48% | 96.80% | 95.97% | 102.57% | 98.15% | | | | |
| Oak Grove SD | 91.46% | 96.24% | 99.19% | 99.71% | 98.73% | 98.08% | 94.04% | 100.33% | | | | |
| Orchard SD | 90.18% | 98.12% | 102.72% | 98.40% | 98.74% | 97.12% | 102.84% | 95.50% | | | | |

[1] Low cohort survival factors at the kindergarten to first grade transition are due to the implementation of transitional kindergarten at the elementary school level.

Inputs and Methodology *Birth Rates*

Actual and Projected Birth Rates as reported by DOF

| Birth Year | School District Births ^[1] | County Births ^[2] | Kindergarten Year | Birth Rate ^[3] |
|------------|---------------------------------------|------------------------------|-------------------|---------------------------|
| 2009 | 9,698 | N/A | 2014 | N/A |
| 2010 | 8,780 | N/A | 2015 | 90.53% |
| 2011 | 8,801 | N/A | 2016 | 100.24% |
| 2012 | 8,867 | 24,308 | 2017 | 100.75% |
| 2013 | N/A | 23,224 | 2018 | 95.54% |
| 2014 | N/A | 23,392 | 2019 | 100.72% |
| 2015 | N/A | 23,427 | 2020 | 100.15% |
| 2016 | N/A | 23,462 | 2021 | 100.15% |
| 2017 | N/A | 23,477 | 2022 | 100.06% |
| 2018 | N/A | 23,477 | 2023 | 100.00% |
| 2019 | N/A | 23,470 | 2024 | 99.97% |
| 2020 | N/A | 23,414 | 2025 | 99.76% |
| 2021 | N/A | 23,361 | 2026 | 99.77% |

[1] Birth information from the CDPH for ZIP codes served by EUHSD.

[2] Actual and projected births documented for the County of Santa Clara by DOF.

[3] Birth rates are based on School District births for 2009 through 2012 and based on County Births for 2013 through 2021.

Inputs and Methodology *Student Generations Factors (“SGFs”)*

Single Family Detached Units

| Grade Level | SFD SGF | Students Per 100 Homes |
|--------------------------|---------|------------------------|
| Elementary School (K-6) | 0.3374 | 33.74 |
| Junior High School (7-8) | 0.0996 | 9.96 |
| High School (9-12) | 0.2140 | 21.40 |

Multifamily Attached Units

| Grade Level | MFA SGF | Students Per 100 Homes |
|--------------------------|---------|------------------------|
| Elementary School (K-6) | 0.1904 | 19.04 |
| Junior High School (7-8) | 0.0492 | 4.92 |
| High School (9-12) | 0.1156 | 11.56 |

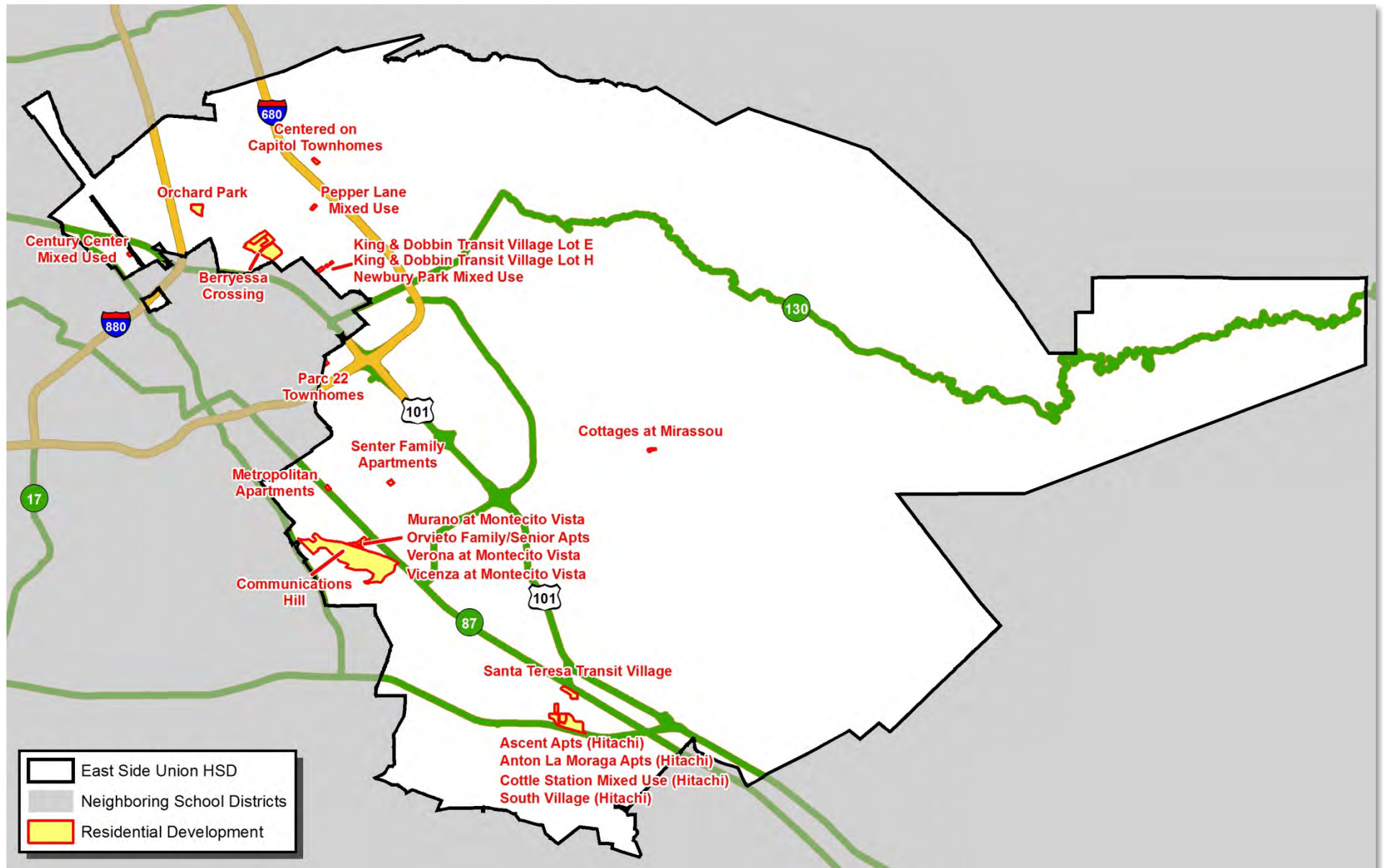
Inputs and Methodology *Future Residential Development*

Projected Annual Residential Development^[1]

| Year | SFD Units | MFA Units | Total |
|--------------|-----------|--------------|--------------|
| 2015 | 49 | 495 | 544 |
| 2016 | 50 | 787 | 837 |
| 2017 | 0 | 699 | 699 |
| 2018 | 0 | 723 | 723 |
| 2019 | 0 | 783 | 783 |
| 2020 | 0 | 961 | 961 |
| 2021 | 0 | 640 | 640 |
| Total | 99 | 5,088 | 5,187 |

[1] Based on information obtained from the City of San Jose

Inputs and Methodology *Future Residential Development Map (2015-2025)*



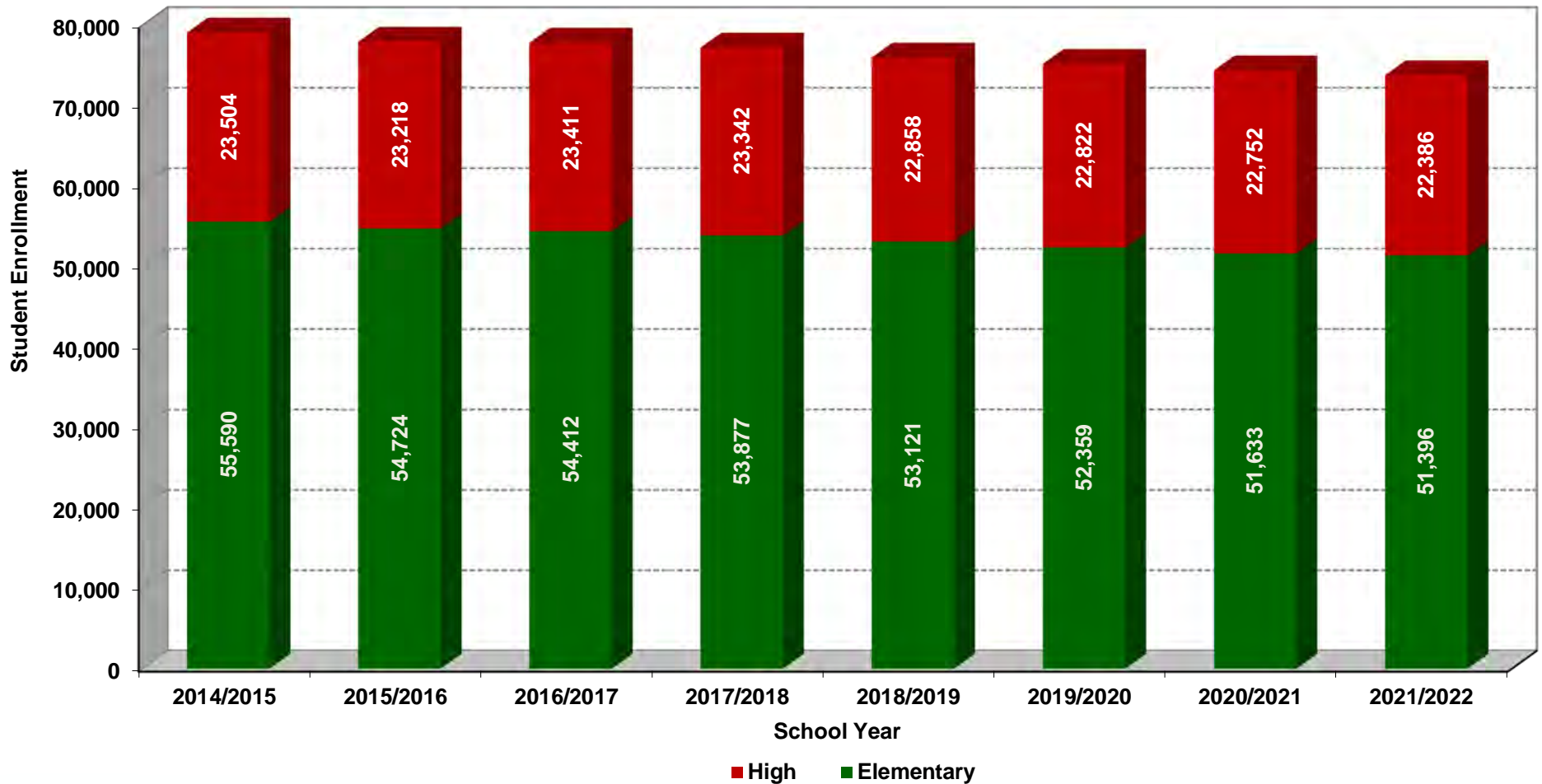
The logo of East Side Union High School District is a circular seal. It features a central shield with a cross-like design. The text "EAST SIDE UNION" is arched across the top, and "HIGH SCHOOL DISTRICT" is arched across the bottom. The words "Wilson" and "Valley" are written in a smaller font across the middle of the shield.

Section IV:

Districtwide Enrollment Projection

Districtwide Enrollment Projection

Student Enrollment Projections by School Year



Districtwide Enrollment Projection *By Grade*

Student Enrollment Projections by School Year

| Grade | 2014/2015 | 2015/2016 | 2016/2017 | 2017/2018 | 2018/2019 | 2019/2020 | 2020/2021 | 2021/2022 |
|--------------|---------------|---------------|---------------|---------------|---------------|---------------|---------------|---------------|
| 9th Grade | 5,990 | 5,609 | 5,678 | 5,651 | 5,549 | 5,619 | 5,608 | 5,255 |
| 10th Grade | 5,775 | 6,027 | 5,708 | 5,740 | 5,704 | 5,605 | 5,677 | 5,674 |
| 11th Grade | 5,734 | 5,798 | 6,115 | 5,757 | 5,780 | 5,749 | 5,646 | 5,730 |
| 12th Grade | 6,005 | 5,783 | 5,910 | 6,194 | 5,825 | 5,849 | 5,821 | 5,726 |
| Total | 23,504 | 23,218 | 23,411 | 23,342 | 22,858 | 22,822 | 22,752 | 22,386 |

Districtwide Enrollment Projection *By School of Attendance*

Student Enrollment Projections by School Year

| School of Attendance | 2014/2015 | 2015/2016 | 2016/2017 | 2017/2018 | 2018/2019 | 2019/2020 | 2020/2021 | 2021/2022 | Capacity ^[1] |
|----------------------|---------------|---------------|---------------|---------------|---------------|---------------|---------------|---------------|-------------------------|
| ACCEL Middle College | 51 | 51 | 52 | 53 | 51 | 51 | 50 | 49 | N/A |
| Andrew Hill HS | 2,010 | 1,944 | 1,957 | 1,950 | 1,936 | 1,897 | 1,835 | 1,814 | 2,303 |
| Apollo HS | 152 | 153 | 158 | 160 | 153 | 149 | 146 | 148 | 74 |
| Calero HS | 165 | 165 | 166 | 166 | 163 | 162 | 158 | 156 | 414 |
| Evergreen Valley HS | 2,711 | 2,753 | 2,784 | 2,818 | 2,783 | 2,759 | 2,720 | 2,637 | 2,700 |
| Foothill HS | 343 | 333 | 343 | 346 | 336 | 336 | 336 | 339 | 351 |
| Independence HS | 3,107 | 3,052 | 3,144 | 3,185 | 3,180 | 3,283 | 3,369 | 3,384 | 3,954 |
| James Lick HS | 1,108 | 1,094 | 1,112 | 1,113 | 1,119 | 1,166 | 1,187 | 1,184 | 1,557 |
| Mount Pleasant HS | 1,452 | 1,418 | 1,393 | 1,373 | 1,334 | 1,289 | 1,317 | 1,282 | 2,478 |
| Non-Public School | 74 | 73 | 75 | 74 | 73 | 73 | 74 | 73 | N/A |
| Oak Grove HS | 1,903 | 1,847 | 1,887 | 1,891 | 1,896 | 1,889 | 1,874 | 1,830 | 2,427 |
| Pegasus HS | 129 | 127 | 132 | 134 | 128 | 130 | 133 | 134 | 45 |
| Phoenix HS | 79 | 75 | 76 | 79 | 75 | 77 | 73 | 72 | 75 |
| Piedmont Hills HS | 2,215 | 2,174 | 2,160 | 2,142 | 2,078 | 2,055 | 2,007 | 1,954 | 2,398 |
| Santa Teresa HS | 2,306 | 2,249 | 2,264 | 2,246 | 2,151 | 2,088 | 2,043 | 1,974 | 2,356 |
| Silver Creek HS | 2,464 | 2,465 | 2,474 | 2,457 | 2,367 | 2,349 | 2,321 | 2,264 | 2,661 |
| W.C. Overfelt HS | 1,455 | 1,471 | 1,459 | 1,395 | 1,368 | 1,396 | 1,463 | 1,473 | 1,926 |
| Yerba Buena HS | 1,780 | 1,774 | 1,775 | 1,761 | 1,666 | 1,674 | 1,647 | 1,621 | 2,091 |
| Total | 23,504 | 23,218 | 23,411 | 23,342 | 22,858 | 22,822 | 22,752 | 22,386 | 27,810 |

[1] As identified in Demographic Analysis and Enrollment Projection Study for East Side Union High School District dated February 14, 2013.

Districtwide Enrollment Projection *School of Attendance*

Student Enrollment Projections by School Year

